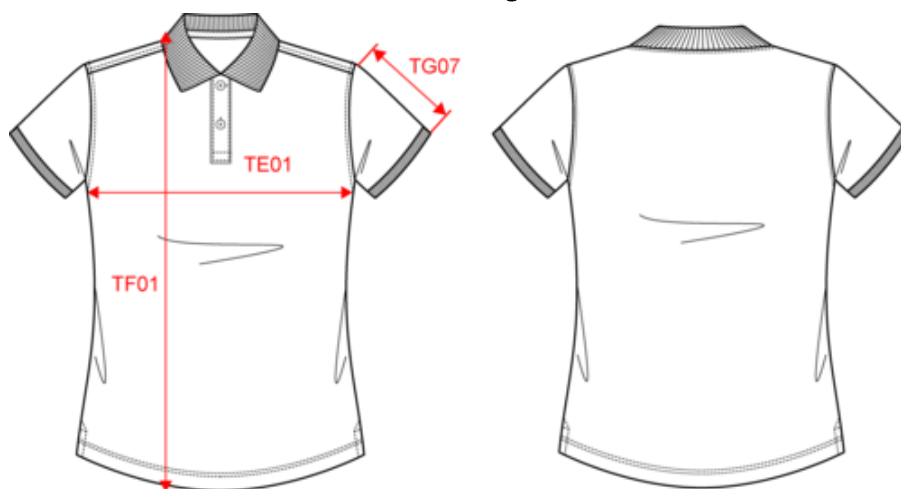


NS208
Ecologische damespolo in piquétricot

Afmeting



| Measurements in cm | XS | S | M | L | XL | XXL |
|---|-------|-------|-------|-------|-------|-------|
| TE01 - 1/2 chest width at 1.5cm below armhole | 43.00 | 46.00 | 49.00 | 52.00 | 55.00 | 58.00 |
| TF03 - Front total height from HSP | 61.00 | 63.00 | 65.00 | 67.00 | 69.00 | 71.00 |
| TG07 - Short sleeve length | 15.25 | 16.00 | 16.75 | 17.50 | 18.25 | 19.00 |